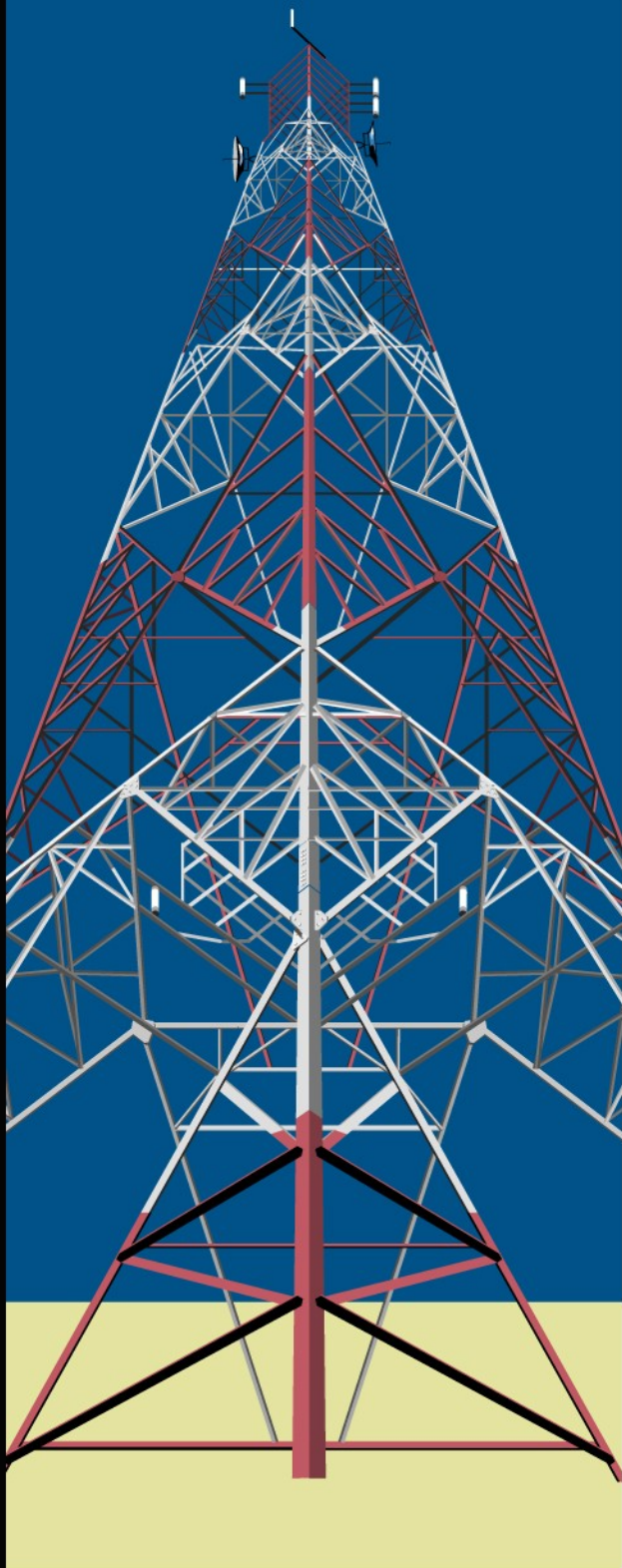


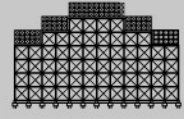
A Tower Of Infrastructure Solutions



Transmission tower



Microwave tower



Water tank

At Rohas-Euco Industries (REI), it is our business to power nations towards the transformation to a global digital community through innovative solutions in water, telecommunications and power infrastructure.

With close to 20 years of experience, we are now at the forefront in design and fabrication of steel lattice towers for Telecommunications/Broadcasting and Power Transmission /Substations. Our extensive range of products are continuously improved and transmission towers have been designed to cater for the complete range from 33kV to 500kV requirements.

From light, medium to heavy-duty; up to 600 feet free-standing towers and monopoles, our professional in-house engineering team, supported by dedicated Research & Development, can deliver your telecommunication base station infrastructure needs from design, planning, installation to commissioning on a fast-track basis.

Solutions you would expect from a company with an industrious track record of supporting Asia's TACS, AMPS, GSM and PCN systems' tower requirements. Today, we are a major player in providing infrastructure solutions for the fast track migration to digital platform and 3G within Malaysia and Asia.

So, for the network total infrastructure solution ... REI towers power your project.



Rohas-Euco Industries Bhd (4129-H)

Rumah Rohas, 2nd Floor, No. 61 Jalan Raja Abdullah, Kampung Baru, 50300 Kuala Lumpur, Malaysia.

Tel: (603) 2697 3900. Fax: 2697 5900, 2697 0900. www.rohaseuco.com Email: rei@rohaseuco.com